

ROCON

Road Control



ADVANCED LIGHT

Advanced Light AS
Fornebuveien 37

N-1366 Lysaker, Norway

Telephone: +47 67 10 23 50

Telefax: +47 67 10 23 51

Enterprise: NO 980 059 588 MVA

E-mail: mail@advancedlight.com

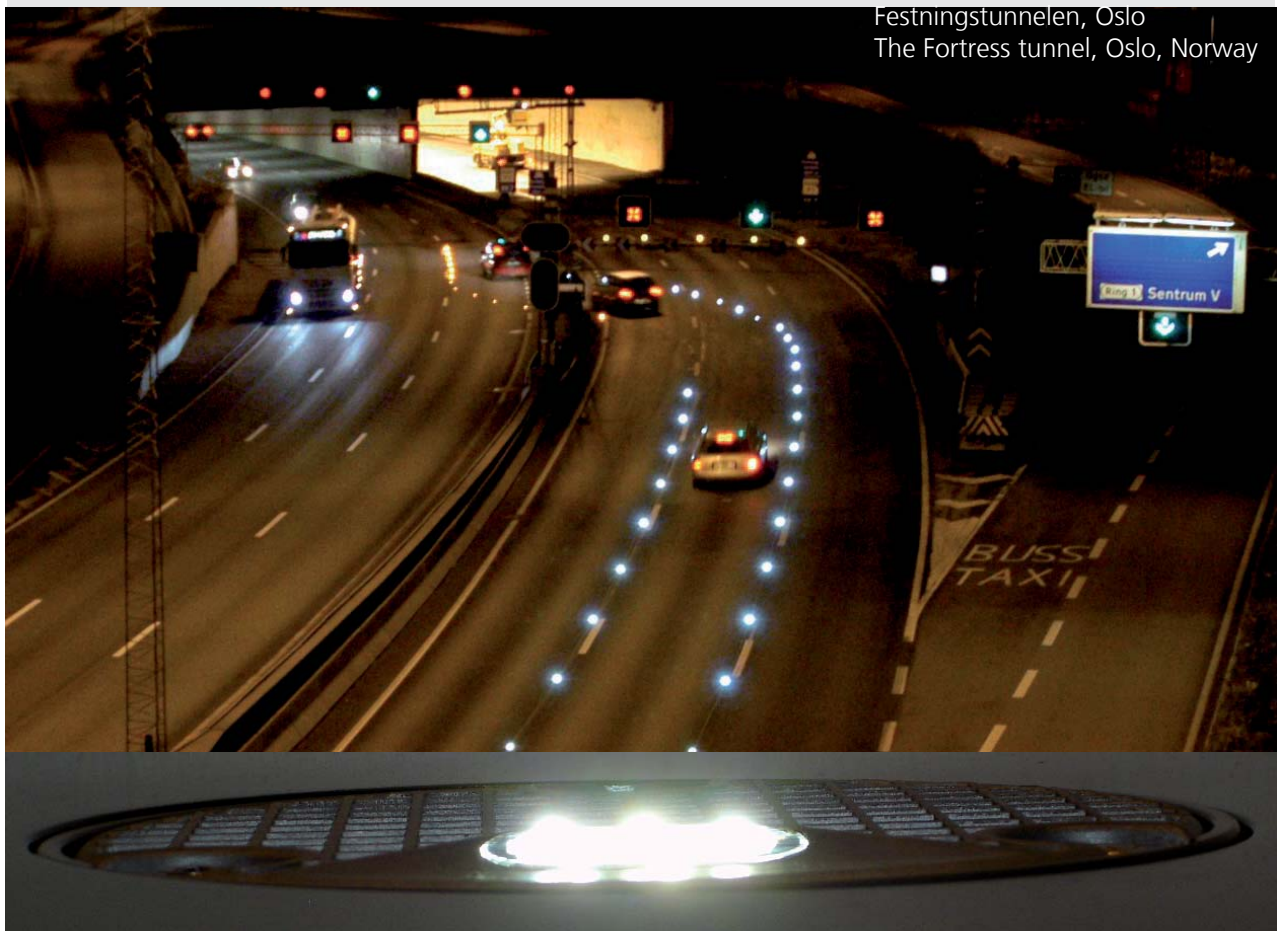
URL: www.advancedlight.com

ADVANCED LIGHT

100% Full flush road
In-pavement Light

DRM, Dynamic Road Marker

Extremely suitable for
winter maintenance!



Festningstunnelen, Oslo
The Fortress tunnel, Oslo, Norway

No parts above ground
Easy to install
Easy to maintain
Aluminium cast alloy
Causes no obstacle for traffic on
the road

Lens not exposed to snow removal
No damages due to snow removal
steel blades
Very resistant against chemicals
Very resistant against leakage-
Causes no rumble from car tyres
thus environmental friendly

No damages on lens from sand
and dirt
No build of snow or dirt in front
of lens
Strong construction, tested to
more than 20 metric tons

Registered design:

Canada: 97101; Switzerland: 127681; Germany: 4 01 00 289.6; Finland: FI 22026; UK: 2098626; Italy: 0000084079; Japan: 1128637;
Norway: 76200; Sweden: 69 037; USA: D498.323;

Patents:

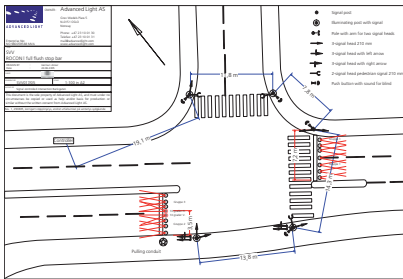
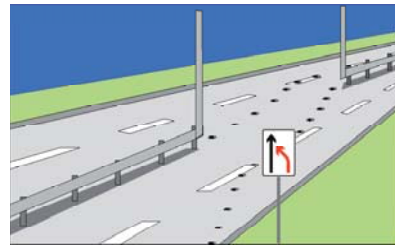
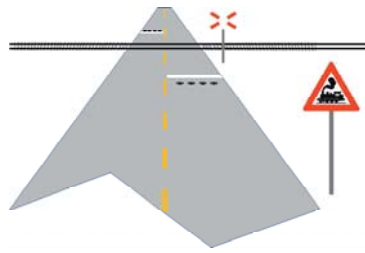
Austria: 1257469; Australia: 776054, 776976; Switzerland: 1257469; Germany: 1257469; Denmark: DK/EP 1257469; Spain: 1257469; Fin-
land: 1257469; France: 1257469; UK: 1257469; Greece: 20040401670; Ireland: 1257469; Italy: 1257469; Netherlands: 1257469; Norway:
313112, 318247; Portugal: 1257469; Sweden: 1257469; USA: 6,752,519; South Africa: 2002/4926

European Patent no:1257469:

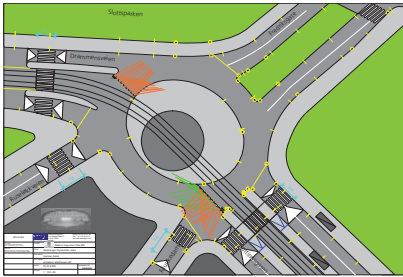
AL, AT, BE, BG, CH, CY, CZ, DE, DK, EE, ES, FI, FR, GB, GR, HR, HU, IE, IT, LI, LT, LU, LLV, MC, NL, PL, PT, RO, SE, SI, SK, TR

ROCON

Road Control



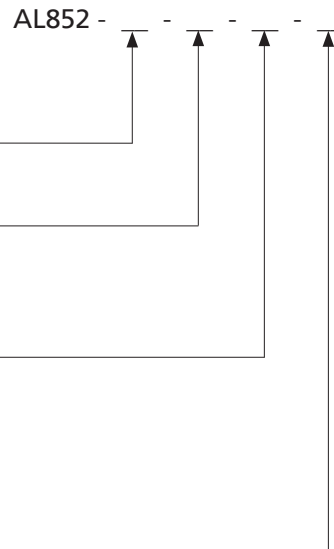
Supplied stop light Lillehammer, Norway



Supplied tram warning lights, Oslo, Norway

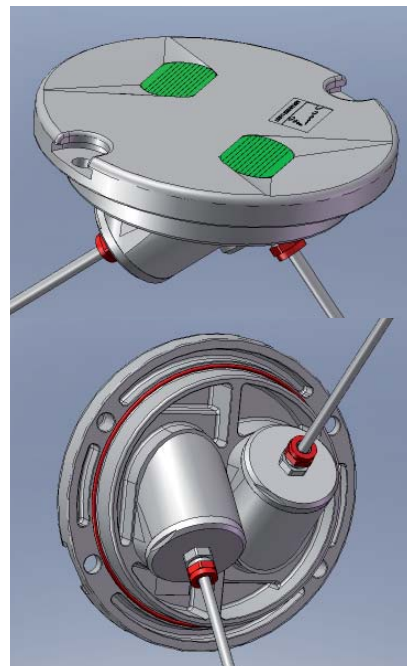
Ordering instructions:

RC1 = ROCON I	
RC2 = ROCON II	
7 = 7" Uni directional	
8 = 8" Bi directional	
L = LED 15W	
U = Halogen 12V 35W	
M = Halogen 12V 50W	
H = Halogen 120V 50W	
W = White	
Y = Yellow	
G = Green	
R = Red	
B = Blue	



Typical Technical Data LED:

Protrusion RI and RII:	0 mm
Diameter base RI:	190 mm
Diameter base RII:	215 mm
Installation depth RI:	104 mm
Installation depth RII:	130 mm
Maximum distance:	>300 m
Input voltage:	20 - 40V DC
Power consumption RI:	1 x 15W
Power consumption RII:	2 x 15W
Reverse polarity protection:	Yes
Transient Voltage protection:	Yes
Transient Current protection:	Yes
Over heat protection:	Yes
Open circuit protection:	Yes
True DC constant current output:	Yes
Monitoring of LED:	Yes (option)
Bypass on LED:	Yes
Light Intensity:	> 100 cd
Available colours:	White, Amber, Red, Green, Blue
Phantom Light exposure:	No
Full daytime visibility:	Yes
Dimming feature:	Yes
Snow plough exposure:	No
Encapsulation:	IP68
Load resistance:	> 20 tons
Sheer load protection:	Yes

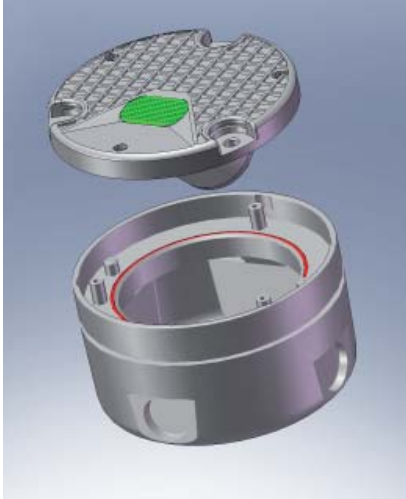


Materials top flange: Anodized dye cast aluminium

Material shallow base: Anodized dye cast aluminium

ROCON

Road Control



ROCON I Unidirectional



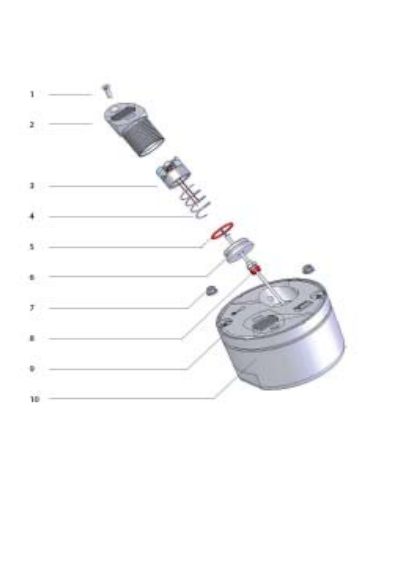
ROCON II Bidirectional cartridge



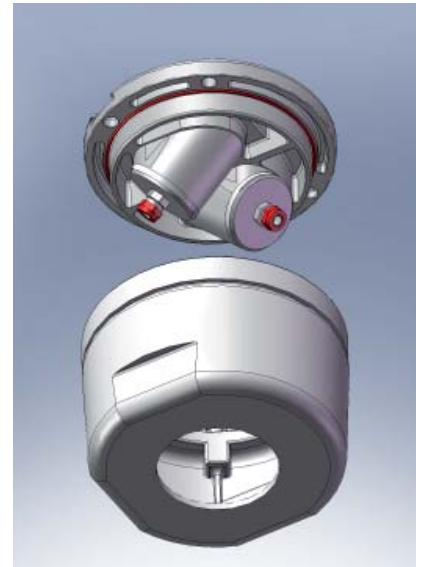
ROCON II Bidirectional closed



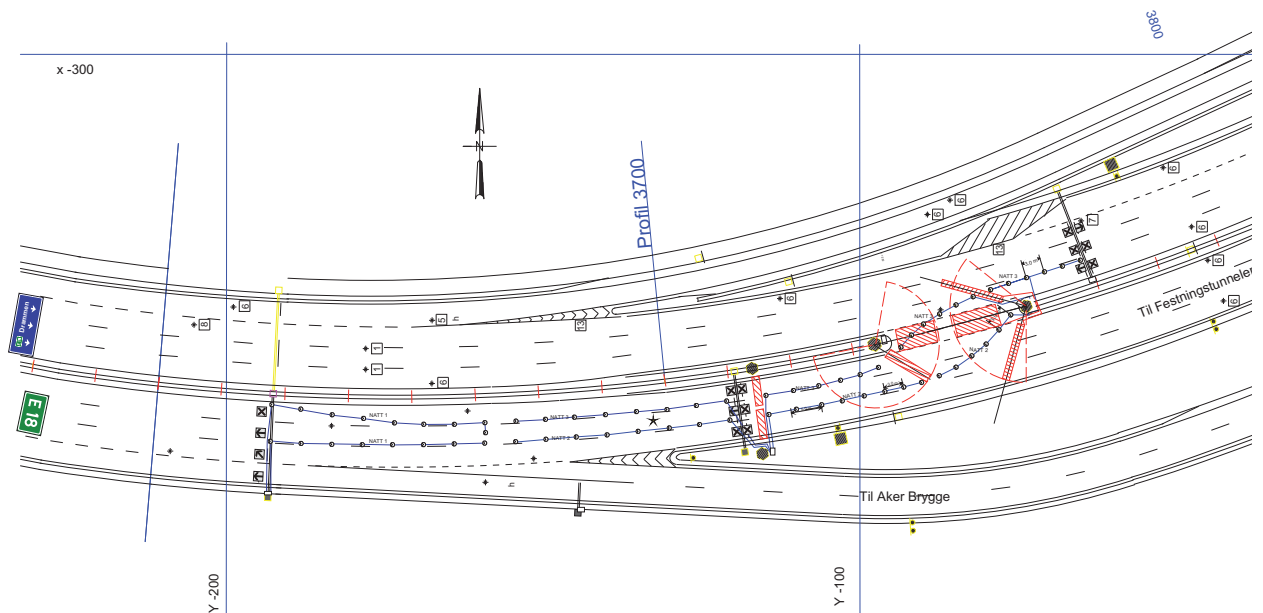
ROCON I Unidirectional



Explosion view Rocon II cartridge



ROCON II Bidirectional closed



Consultant services

Advanced Light AS has the necessary expertise to create solutions for traffic problems. Presented is a sample from a tunnel project in Oslo, Norway.

ROCON

Road Control

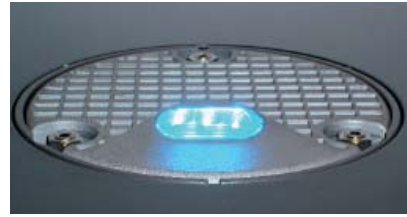
Available colours



Green



Amber



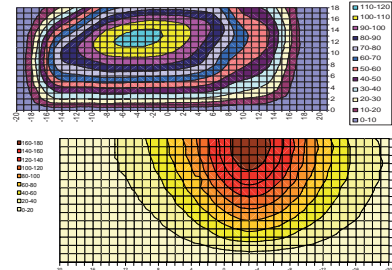
Blue



Red



White



LED photometrics

Advanced Light has developed a unique driver system where driver and diodes are in the same cluster. With this solution Advanced Light offers a total flexibility with extreme performance. With more than 86% true effective current output, and a thorough design based on the latest semi conductor technology, the system will find a natural position in an application, and lasting as long as the LED's it is driving.

The Rocon series is 100% dimmable, where all fixtures will dim identically. Adjust intensity, off/on functions, sequence flashing (option) and simultaneous flashing (option) with remote control.

Tailor made solutions are available.

Depending on cable thickness from 0,75 mm² to 4mm² we can for example operate 35 fixtures up to 300 meters from the power supply connected on one circuit.

Advanced Light has made a calculation program for all parameters necessary in this context. This program can be exchanged after agreement.

WEB-solution

2nd quarter 2008 Rocon is available with full redundant communication via individual IP addresses. This means each light spot will have their own identity, giving a vast amount of applications, and full control for the maintenance section. Any error alarm will be enabled on your PC screen no later than 5 seconds after the fault has occurred.

